



LV JUICE

**.cable.
away**

ONLY
50MM
DEEP*



FBSS19R4P4D - FOUR POWER, FOUR DATA
STANDARD DEPTH



FB Series Shallow Floor Outlet Boxes

Our shallow floor outlet boxes are an ideal way to supply power, data and A/V to open floors of a commercial office building or residential home. With a range of size and finishing options there's a floor box to suit any situation.

FBSS19R4P4DS50 - Shallow Outlet Box with Recessed Lid

POWDER COATED ZINC ANNEALED STEEL BODY

STAINLESS STEEL HEIGHT ADJUSTABLE LID WITH 19MM RECESS SINGLE CABLE EXIT FLAP

20MM AND 25MM KNOCKOUTS PROVIDED FOR EASY CONDUIT ENTRY

FOUR AUTO SWITCHED POWER OUTLETS SUPPLIED

PROVISION FOR FOUR CAT5 OR CAT6 DATA PORTS

*50mm depth below poured concrete, total height adjustable from 75mm up to 100mm



This Month

HAUFF-TECHNIK CABLE & PIPE ENTRIES

PAGE 3

RAYCHEM GAS TORCHES

PAGE 5

FIRE & ACOUSTIC RATED DOWNLIGHT COVERS

PAGE 7

FREE SCORCHED ALMONDS

WHILE STOCKS LAST

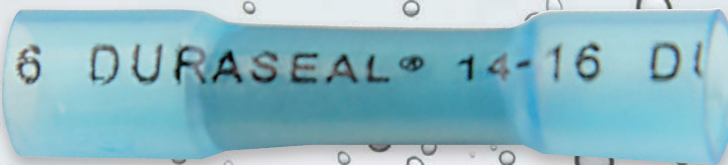
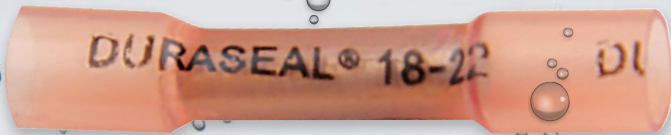
When you spend over \$800 (excl GST) on one invoice this month





ENVIRONMENTALLY SEALED HEATSHRINKABLE CRIMP CONNECTORS

DURASEAL



FEATURES

- Perfect for Automotive and Marine applications
- Adhesive lining enhances protective qualities
- Completely environmentally sealed
- Protects against vibration
- Fully insulates the connection
- Consists of crimp link inside sealant-lined heatshrink sleeve
- UL, CUL and Lloyds listed
- #D4060001 - 0.38-0.95mm²
- #D4060002 - 1.2-2.5mm²
- #D4060003 - 3-6mm²

Raychem
from TE Connectivity



RAYRIM - PROTECTIVE SELF-ADHESIVE EDGING MATERIAL

Manufactured from a Raychem radiation crosslinked polyolefin material, Rayrim's profile offers a clean and rapid means of covering metal, wood and glass edges for all-round protection. Its flexible nature allows for application to both internal and external radii, as well as straight edges, and the continuous operating temperature of -55°C to +80°C [-67°F to 176°F] means Rayrim can give protection under the most testing circumstances.



Supplied profile Recovered profile

APPLICATIONS

Rayrim offers a clean and rapid means of covering metal, wood and glass edges for all round protection

The flexible nature of Rayrim allows application to both internal and external radii, as well as straight edges

Adhesive lining enables excellent adherence to many substrates



Cat No.	Plate Thickness		Length (mm)
	SWG	mm	
RAYRIM-NR6-0-STK	30-24	0.31-0.56	1200
RAYRIM-NR7-0-STK	23-16	0.61-1.63	1200
RAYRIM-NR8-0-STK	15-10	1.83-3.25	1200
RAYRIM-NR9-0-STK	9-5	3.66-5.38	1200



Raychem
from TE Connectivity

All Specials and Products featured in TRANSNET JUICE are available from all good electrical wholesalers.





Hauff-Technik is among Europe's leading manufacturers of cable, pipe and line entries. They provide reliable sealing systems and find the best solution for every requirement, from single-family homes to complex major projects.

Electricity, Telecommunications, Water, Waste Water, or Gas - whenever a perfectly safe sealing of building entries is required, Hauff-Technik offers the best possible solution. Innovative cable and pipe entries, building entries and trenchless house connections of professional quality, all from one source.

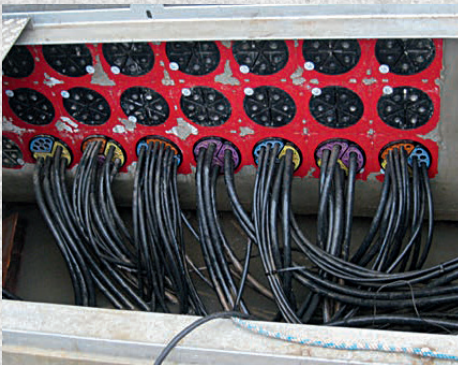


CABLE SEALING SYSTEM OPTIONS

- Single wall insert with one-sided connection on the outside of the building
- Double wall insert with connection on both sides
- Single wall insert with plug-in socket
- Slanted wall insert
- System cover with shrink sleeves
- Split system cover
- Flange surface seal
- Floor entry with tight bend radius Hateflex spiral hose
- HSI 150-SEGMENTO for gentle securing of cables like Fibre
 - Individual clamping of segments
 - Segments can be combined as necessary
 - Gas- and watertight up to 0.5 bar when installed on outside of building

FEATURES

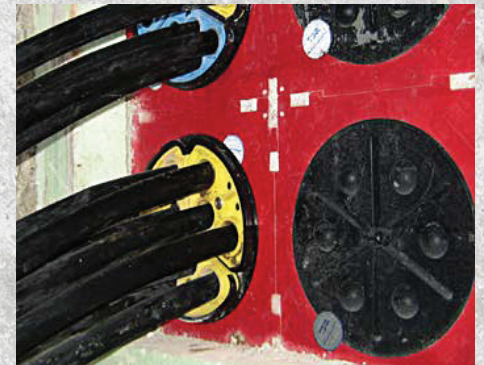
- Stepless adjustment to required wall thickness on-site
- Plug-in frame system for block assembly on-site
- Connection of system sealing possible on both sides
- Insert of system covers for sealing of cables and connection of smooth and corrugated ducts



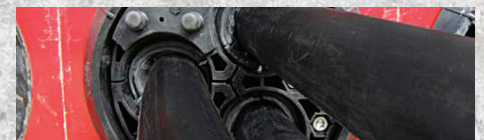
HSI 150 - wall insert with SEGMENTO - sealing of control lines in a substation



HSI 150 - SEGMENTO - with integrated torque control system and bling plugs



Sealing of cables for street lighting with SEGMENTO



Cable Entry	Suitable Wall Thickness (mm)
HSI 150-K2-VARIA/200-260	200-260
HSI 150-K2-VARIA/260-365	260-365
HSI 150-K2-VARIA/365-470	365-470
HSI 150-K2-VARIA/470-575	470-575



TNFC FUSE CARRIERS



SAFECLIP FUSE FITTINGS 32A

- Self cleaning & aligning base contacts
- Clip-in – no tools required for fuse replacement
- Full shrouded contacts, IP20 degree of protection
- DIN rail mounting with easy to remove carrier
- Made from flame retardant thermoplastic
- Rated Voltage 550V
- Australian Standard AS60269 & BS88 Part 6

RS FUSE FITTINGS 63A

- Insulating sleeves to protect cable entry
- Full shrouded contacts, IP20 degree of protection
- Made from tough flame-retardant non-hygroscopic material
- Anti-vibration contact design
- Tapered shank on fuse fixing screws, easy re-entry
- Rated Voltage 690V
- Australian Standard AS60269

Cat No.	Rated Current	Type of Connection	Colour	Pack Quantity
TNFC32FW	32A	FRONT WIRE BASES	BLACK	10
TNFC32BW		BACK WIRE BASE	BLACK	
TNFC32PANEL		BUSBAR/FRONT, 1 STUD	BLACK	5
TNFC32STUD		2 STUD REAR, 2 STUD	BLACK	
TNFC63FW	63A	FRONT WIRE	BLACK	10
TNFC63BW		BACK WIRE	BLACK	

LV FUSES BY TE

NH NS TIA TIS TCP TFP TBC TC TF TKF JHU JPU JSU CYLINDRICAL



TE Connectivity's huge range of LV Fuses is IEC Approved and manufactured to the highest quality standards. Our stock is available with voltage ratings of 500, 550 & 690V AC, gG,Q1 & gG/gL classes, 80, 100 & 120kA rated breaking capacities, and Standard Specifications BS88-2 & IEC/EN 60269-2-1.

**STAGGERED • CENTRAL • OFFSET
• BARREL • J TYPE • DIN**



All Specials and Products featured in TRANSNET JUICE are available from all good electrical wholesalers.





Raychem's new gas torch sets allow you to install Heatshrink products correctly using specialised tools approved by TE. These sets are available in both a standard and Piezo (self igniting) style handle.

STANDARD

The standard Raychem gas torch set features a plastic composite single valve handle with high quality brass metal parts. Suitable for rapid installation of heat-shrinkable materials this set offers maximum burning efficiency and the best available balance of surface pre-heat. All system components are fully compatible.

Contents:

- FH-1630-S-HNZ handle
 - Spindle and valve give very exact & quick flame setting
 - Springloaded metal knob gives precise and stable setting for finest of flames
 - All metal parts made of high quality brass
- 5m long high pressure hose
 - Screw connections for regulator & handles
 - Connection threads: R 3/8", left
 - Internal diameter 4mm
- BN38 38mm nozzle
 - Flame diameter 38mm
 - Gas consumption 0.90kg/h



#GASSETSTD
\$331.59
+ GST

PROMATIC

Featuring the patented Piezo electric ignition, universal handle, advanced design, and ergonomic appearance, the Promatic is a world-beating system for all possible heating tasks where efficiency and professional workmanship are the most important requirements.

Contents:

- Piezo handle
 - Operates with propane and butane gases
 - Gas flow when trigger pressed only
 - Nozzle connection: bayonet socket
- 5m long high pressure hose
 - Screw connections for regulator & handles
 - Connection threads: R 3/8", left
 - Internal diameter 4mm
- BN38 PIE 38mm nozzle
 - Flame diameter 38mm
 - Gas consumption 0.90kg/h



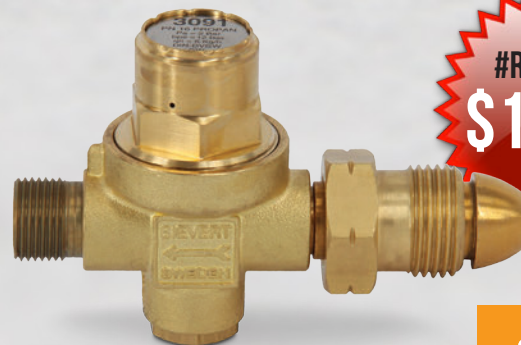
#GASSETPIEZO
\$635.00
+ GST

WHY USE A REGULATOR?

Certain Pro burners require a steady pressure of 2 bar in order to perform well. Other burners can also operate under higher pressures but it is still an advantage to reduce the pressure from the propane cylinder. The advantage to using a regulator is that the pressure can be stabilised to obtain the same result on a warm summer's day as on a cold winter's day.

CONSTANT PRESSURE REGULATOR

- Compatible with all FH-1630 hoses
- Suitable for propane gas bottles from 5kg to 11kg
- FH-1630-PIE-R2
- Gas bottle connection
- W20 x 1/4" LH POL
- Gas flow: max 6 kg/h
- Constant pressure: 2 bar



#REGULATOR
\$127.71
+ GST

Cat No.	Description
GASSETPIEZO	GAS SET PROMATIC 5M HOSE 38MM NOZZLE
GASSETSTD	GAS SET STANDARD 5M HOSE 38MM NOZZLE
REGULATOR	GAS SET REGULATOR

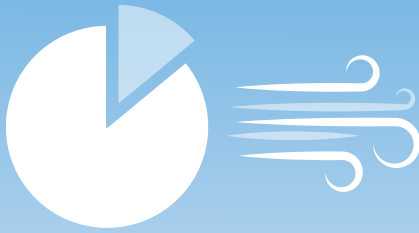




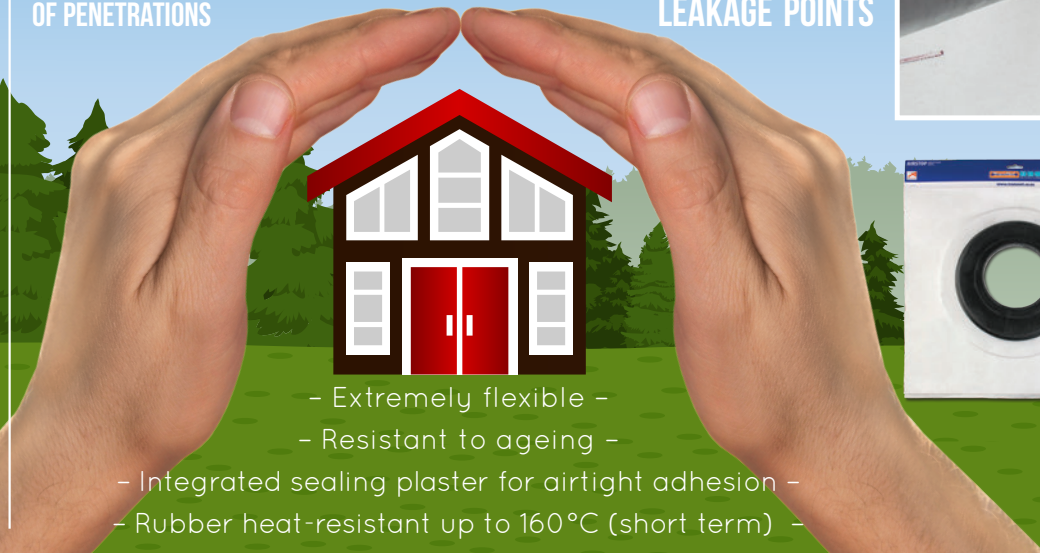
AIRSTOP WEATHER SEALS

SEALING SOLUTIONS FOR BUILDING PENETRATIONS

14%
OF AIR LEAKAGE FROM ANY BUILDING IS CAUSED BY POOR SEALING OF PENETRATIONS



PENETRATIONS ARE ONE OF SEVEN MAIN AIR LEAKAGE POINTS

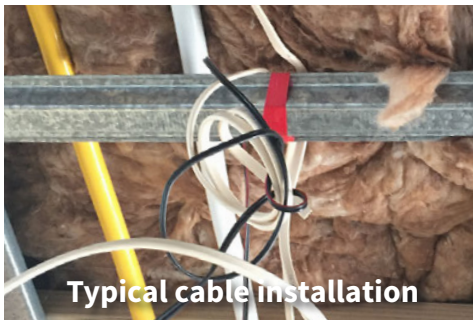


- Extremely flexible -
- Resistant to ageing -
- Integrated sealing plaster for airtight adhesion -
- Rubber heat-resistant up to 160°C (short term) -



ISOCELL

WELL-HUNG CABLE SUPPORT BRACKET



#WELL-HUNG
\$2.40
+ GST EACH.*



Patent #718806

Are You Well-Hung

Well-Hung Support Bracket

NZ designed and manufactured, the Well-Hung Support Bracket facilitates effortless installation of electrical and data cables on metal formed and wooden ceiling and wall battens. The bracket clips or screws to a multitude of batten profiles and trusses, ensuring cables are contained safely within the bracket catchment rather than landing

in the batten tray - avoiding the risk of electrocution from screws penetrating up through them.

Features

- Cables securely contained
- Quick and easy to install
- Reduced labour costs
- Ensures tidy wiring



Proudly supporting:



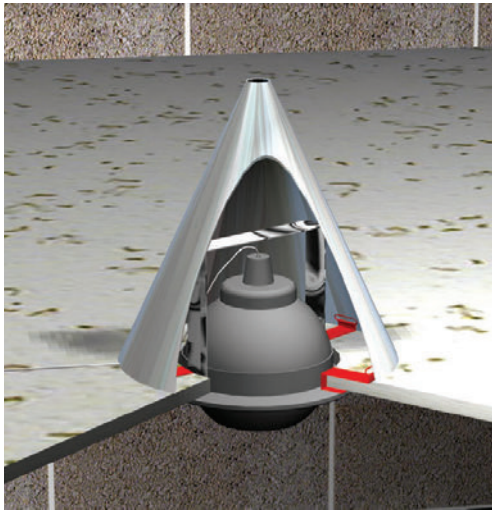
FREE PACK OF CHOCOLATE BLUEBERRIES

with every box of 100 Well-Hung sold this month





FIRE RETARDANT INTUMESCENT DOWNLIGHT COVER



RYANFIRE'S Ventilated Downlight Covers are fire rated firehoods designed to fire rate downlight fixtures and reinstate the performance of ceilings when penetrated by recessed downlights. Available in two sizes, these covers suit a wide range of lighting products over and above those covered by fire rated downlights, and have been designed to provide two hours fire integrity to circular downlights up to 200mm diameter.

The covers are simple to install and can be retrofitted into position, providing effective performance even if the downlight is removed and replaced. They prevent combustible materials from coming into contact with hot downlights – thus minimising fire risk. The downlight covers are ventilated to allow heat to disperse from the light, but in the event of a fire the intumescent material expands to seal off the ceiling cut-out and vent holes.

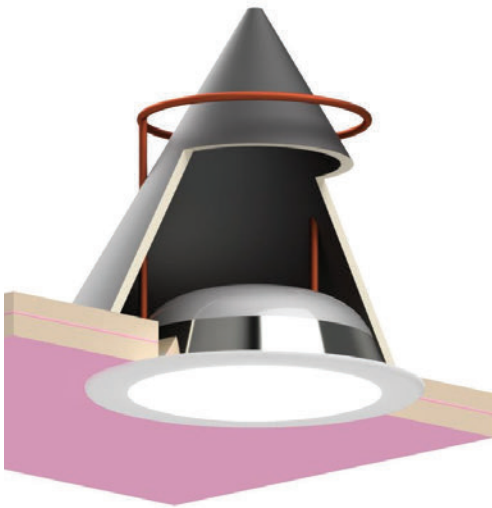
Sprung steel stiffeners allow the downlight cover to be folded and easily pushed through the openings created for the light unit.

Features

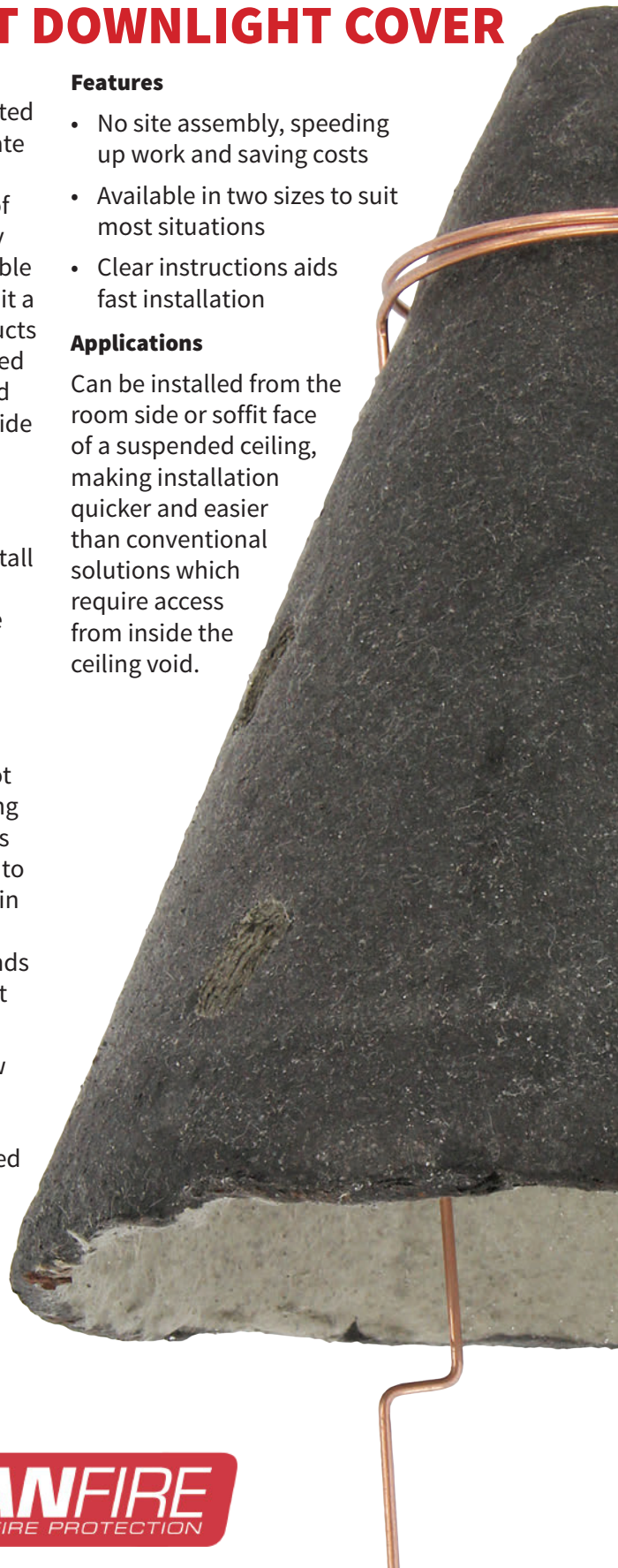
- No site assembly, speeding up work and saving costs
- Available in two sizes to suit most situations
- Clear instructions aids fast installation

Applications

Can be installed from the room side or soffit face of a suspended ceiling, making installation quicker and easier than conventional solutions which require access from inside the ceiling void.



System Drawing V62 - available on request



Cat No.

FTDLCOVER200
FTDLCOVER250

Description

FIRE RATED DOWNLIGHT COVER 200MM X 200MM
FIRE RATED DOWNLIGHT COVER 250MM X 250MM

DON'T LOSE COUNT

CCG True Two Piece Glands



TransNet New Zealand Ltd

Auckland

78 Cryers Road
East Tamaki
Auckland
NEW ZEALAND
Ph 0800 442 182
Fax 0800 442 183
PO Box 39 383
Howick, Auckland

Wellington

10 Petone Ave
Petone
Wellington
NEW ZEALAND
Ph 04 576 2530
Fax 04 576 0040
PO Box 39 383
Howick, Auckland

NEW ZEALAND

sales@transnet.co.nz

TransNet Tonga

Ma'ufanga

Small Industries
Ma'ufanga
TONGA
Ph +67 627 939
Fax +67 627 976
PO Box 2932
Nukualofa

TONGA

transnet@kalianet.to



In hazardous areas all Ex equipment needs to be installed and operate correctly according to the certification of the equipment. One of the most common ways for Ex equipment to fail is to wrongly specify or wrongly fit cable glands.

Most glands consist of several loose components such as cones, cone rings, and seals, all of which must be correctly fitted to achieve a safe Ex installation. The problem with most glands is that they

could have loose components and essential parts could be left out.

The CCG gland with its captive components is a genuine two piece handling gland, with all its parts built in for safety.

FEATURES

- Multi Armour Cone (MAC) for use on different armour types - only one gland required
- Dual certified EExde IIC
- Captive/disconnect cone and cone ring concept, providing an armour clamp and earth bond without twisting the armouring, which can be inspected after installation
- Factory fitted captive electrometric seals for built in safety
- Seals on both inner and outer sheaths to IP66/68



- Nickel plating as standard for added protection against bi-metallic corrosion
- Complete with a polypropylene gasket

Why chase after so many loose components?



CONTACT US FOR MORE INFORMATION

CCG[®]
CABLE TERMINATIONS

TransNet NZ Ltd has made every reasonable effort to ensure the accuracy of this information and it is to the best of our knowledge correct and reliable. Under no circumstances does this constitute an assurance of any particular quality or performance and users should independently evaluate the suitability of products for their desired application. All information in this publication including pricing, drawings, illustrations, images and graphic designs are reflections of our current understanding. TransNet NZ Ltd reserves the right to make any adjustment to this information at any time. Our liability for the products outlined in this publication is set forth in our standard terms and conditions of trade. In case of any potential ambiguities or questions, please contact us for clarification.



NEW ZEALAND OWNED